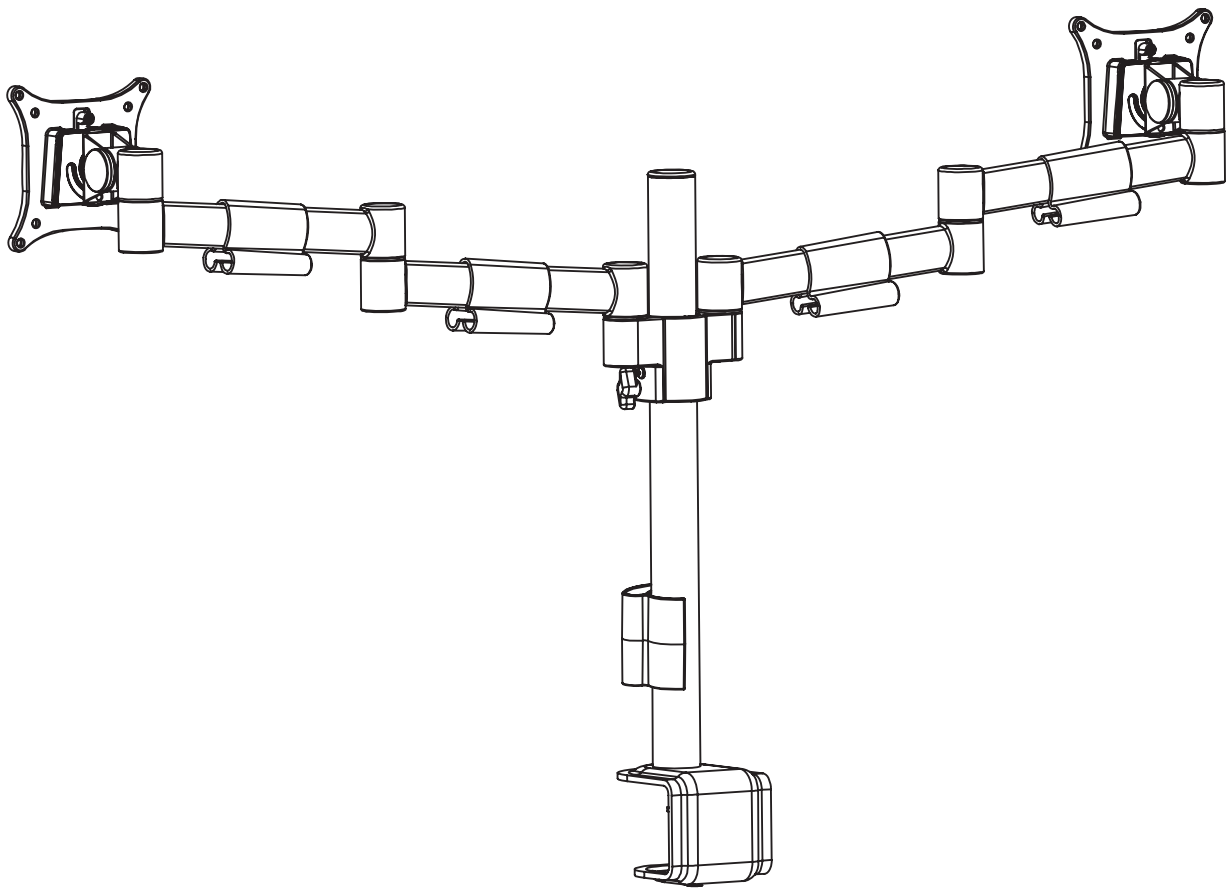


# $\lambda$ utonomous











smart office

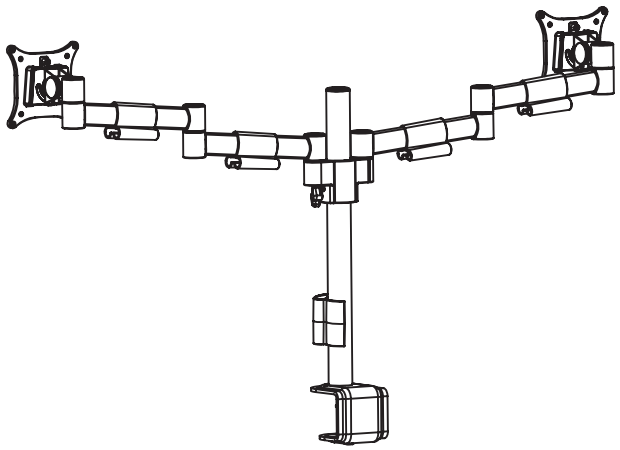


## DUAL MONITOR ARM

### Assembly & Instructions

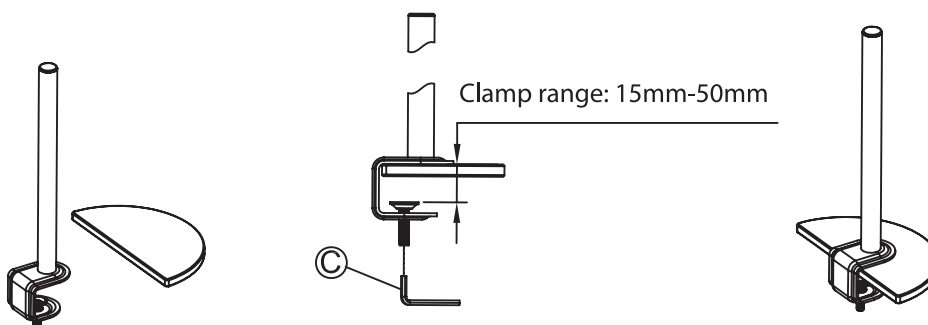
## PART LIST

No.	Items	Specs	Qty
A			8
B			8
C		M6	1
D		M4	1
F		M2. 5	1
G			1
H			2
I			1
J		M8*90	1
K			1

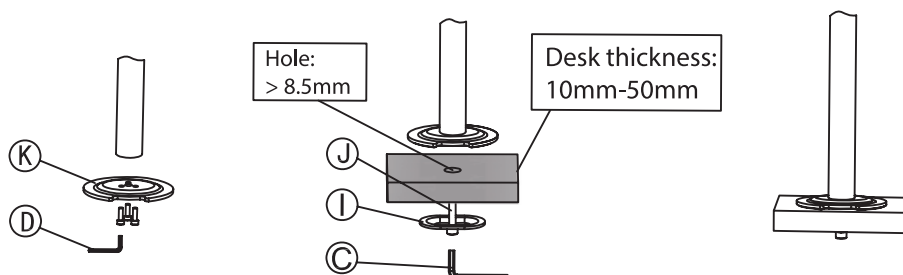


## CLAMP INSTALLATION

### Desk Clamp

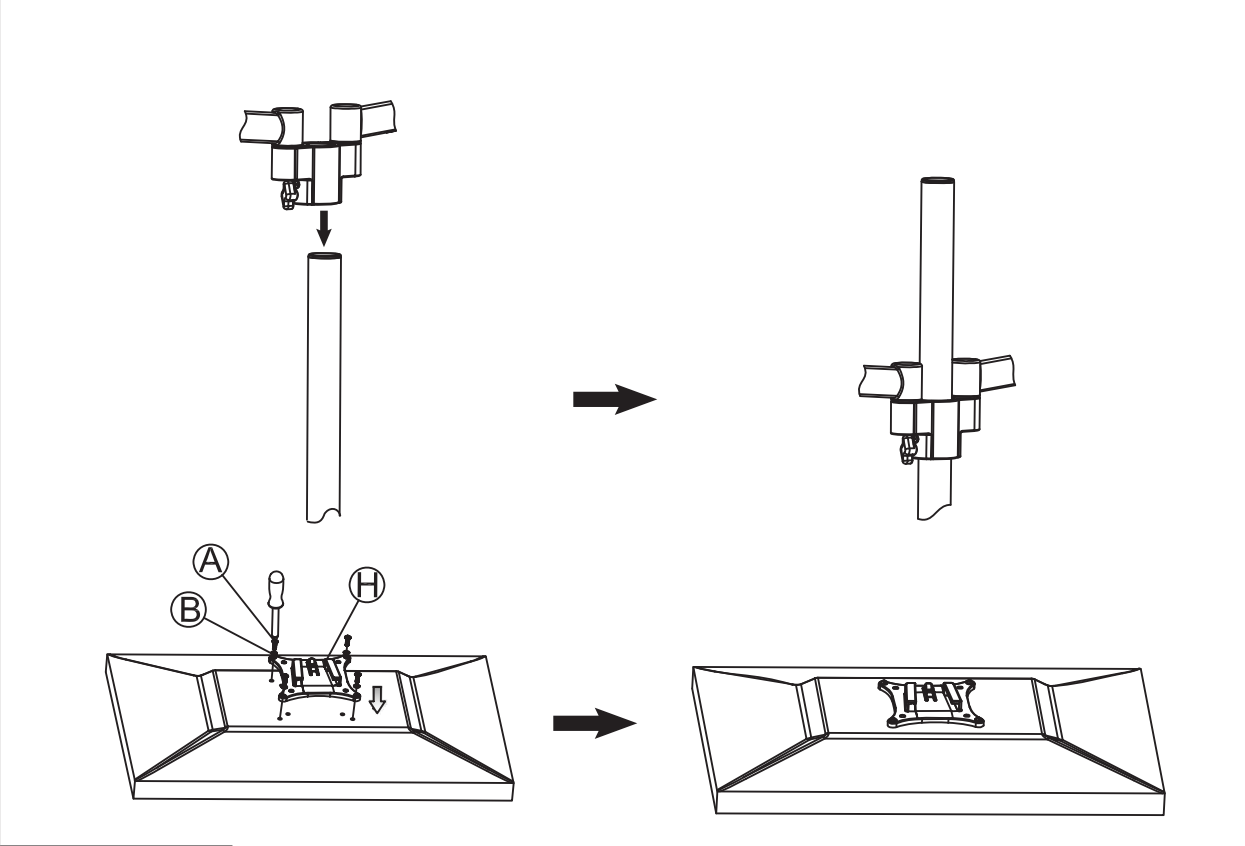


### Thru Desk

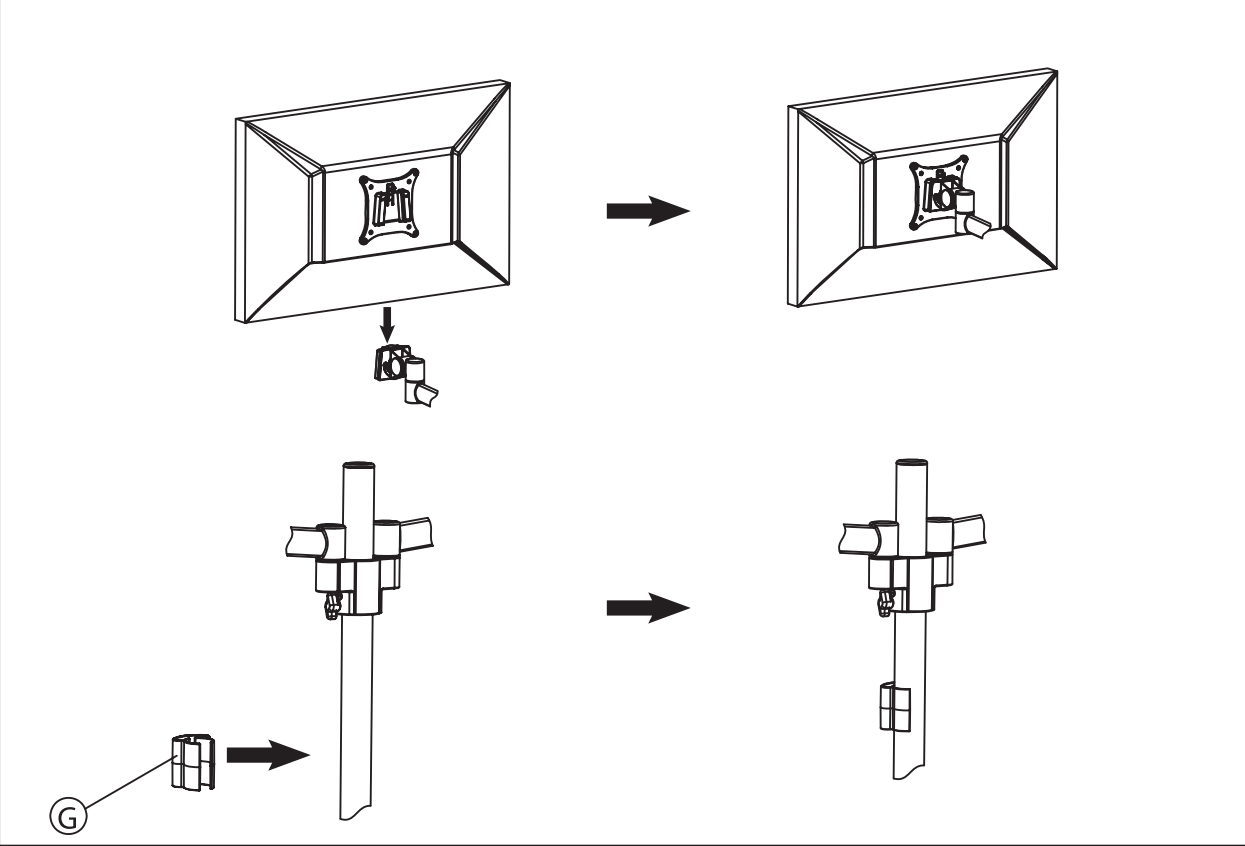


# MONITORS INSTALLATION

## Step 01

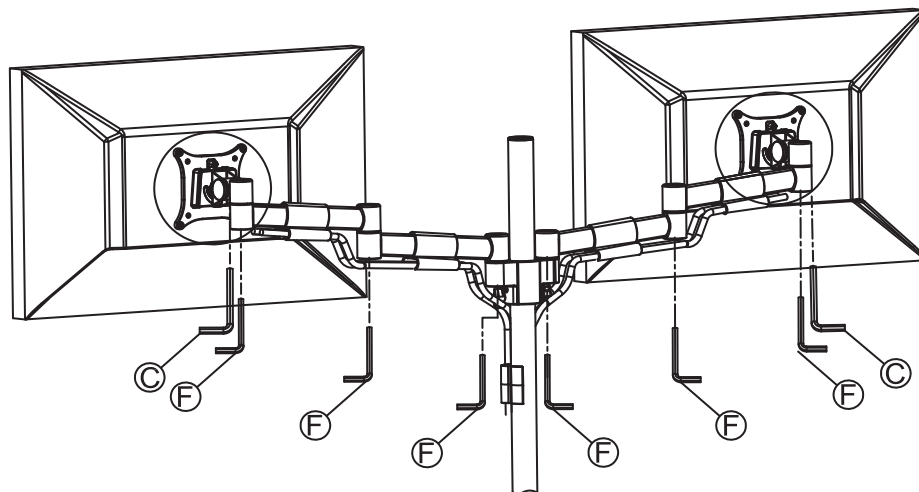


## Step 02



# ARM ADJUSTMENT

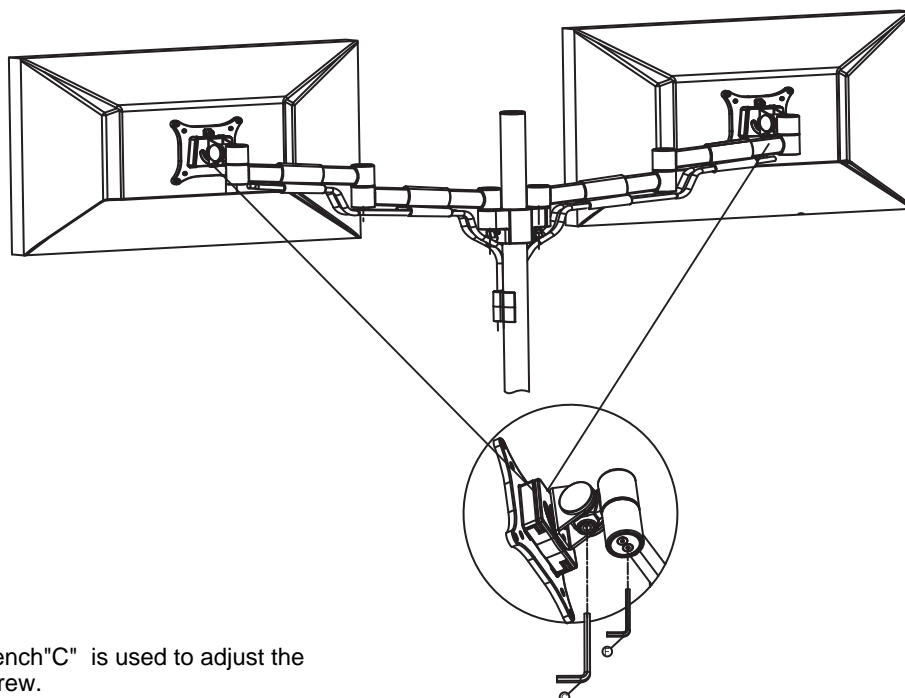
## Step 01



Note:

1. Wrench "C" is used to adjust the Tilt screw.
2. Tighten this screw to fix the monitor.

## Step 02



Note:

1. Wrench "C" is used to adjust the Tilt screw.
2. Tighten this screw to fix the monitor.